



# For Lease

## Class A office space available for immediate occupancy

**Rental Rate:** Available upon request

Floor	Availability	Possession	Comment
Garden level	1,974 RSF	Immediate	Glass entrance doors
Garden level	2,341 RSF	Immediate	Open floor plan
1 <sup>st</sup> floor	4,318 RSF	Immediate	Private offices along window line
1 <sup>st</sup> floor	5,088 RSF	Arranged	Corner unit along window line

### Property Highlights:

- On-site ownership/management
- Ownership will modify space to meet tenant's needs
- Fully-sprinklered
- Variety of restaurants, shopping centers, daycare and hotels located within (3) miles of Airport Corporate Center
- Abundant parking

### Property Features:

- Located directly off of Veterans Memorial Highway and adjacent to Long Island MacArthur Airport
- Minutes from the LIE (I-495) and Sunrise Highway (Route 27)
- Minutes from the Long Island Railroad (MTA) Ronkonkoma Station

## Airport Corporate Center One Corporate Drive Bohemia, NY

**Ray Ruiz**

Executive Vice President  
+1 631 962 2890  
[ray.ruiz@am.jll.com](mailto:ray.ruiz@am.jll.com)

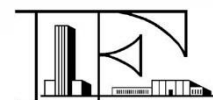
**Marianne Dugan**

Vice President  
+1 631 962 2891  
[marianne.dugan@am.jll.com](mailto:marianne.dugan@am.jll.com)

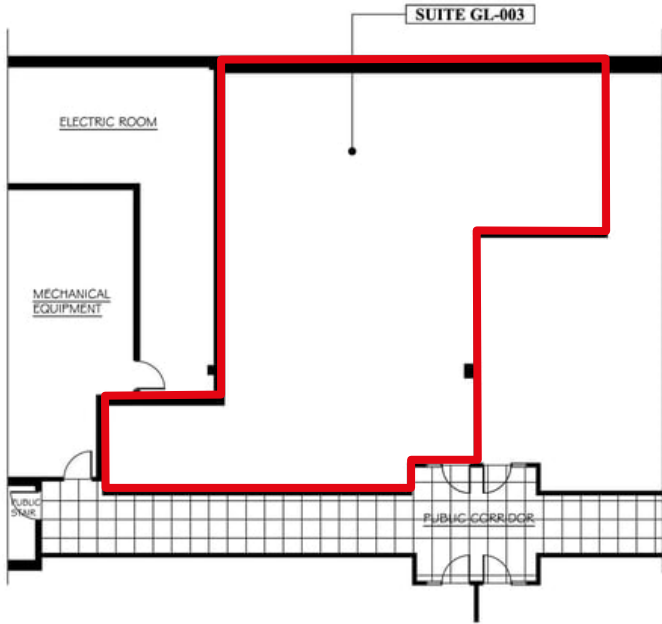
**John A. Nielsen**

Associate  
+1 631 962 7382  
[johna.nielsen@am.jll.com](mailto:johna.nielsen@am.jll.com)

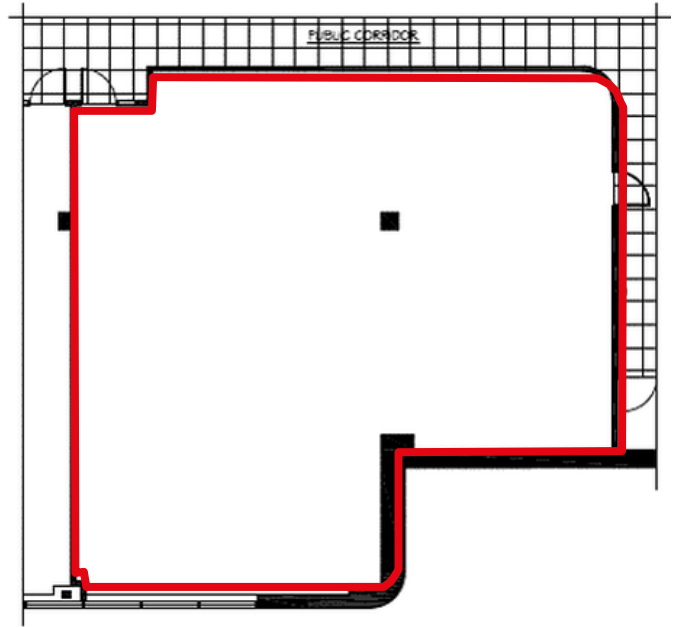
<http://airportcorporateoffice.com>



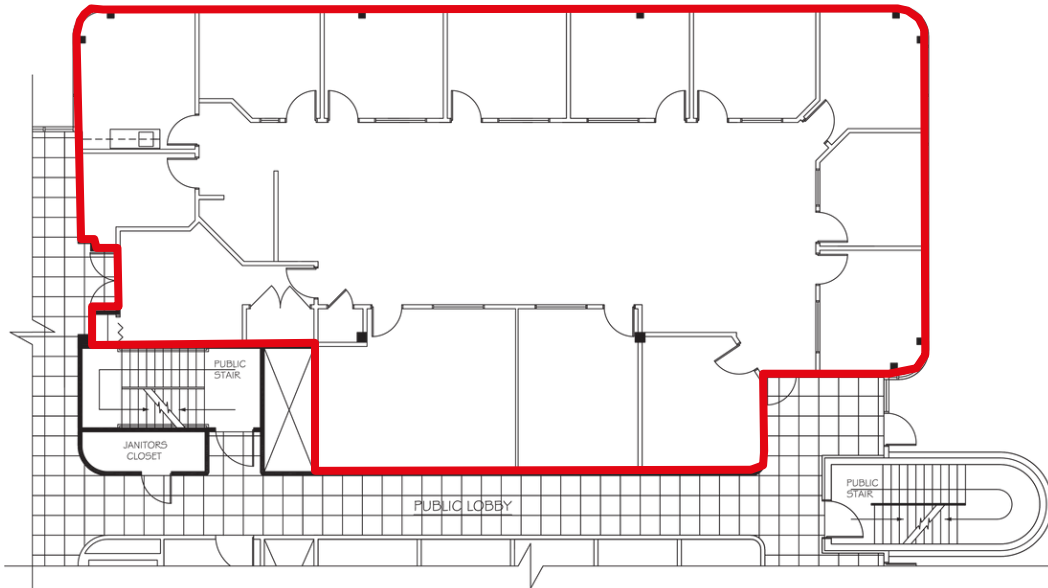
Garden level: 1,974 SF



Garden level: 2,341 SF



1st floor: 4,318 SF



First floor: 5,088 SF

